

**Plant Adaptations: Past and Present
Student Post-Assessment**

1) Which adaptations help a plant live in a desert habitat?

(Choose the best answer)

- Ⓐ Leaves that are wide and flat to compete with other leaves for sunlight
- Ⓑ Leaves with a thick waxy coating to help keep water inside
- Ⓒ Leaves with large air spaces so that they can float on water
- Ⓓ Desert plants do not have adaptations

2) Malak has been learning about making claims that are supported by evidence. Why is this important? (Choose the best answer)

- Ⓐ Because claims are based on ideas that Malak or someone else can prove
- Ⓑ Because Malak's teacher told them to make a claim
- Ⓒ Because claims make Malak smile
- Ⓓ Because opinions are important to Malak

3) What kind of information can we learn from fossils?

(Choose the best answer)

- Ⓐ The life cycle of organisms that lived a long time ago
- Ⓑ The behavior of organisms that lived a long time ago
- Ⓒ The color of organisms that lived a long time ago
- Ⓓ The types of organisms that lived a long time ago

4) Which of these statements is true?

- Ⓐ Mosses are very tall plants.
- Ⓑ Ferns produce flowers, seeds, and cones.
- Ⓒ Flowering plants transport water in tube-like structures.
- Ⓓ Conifers do not have roots.

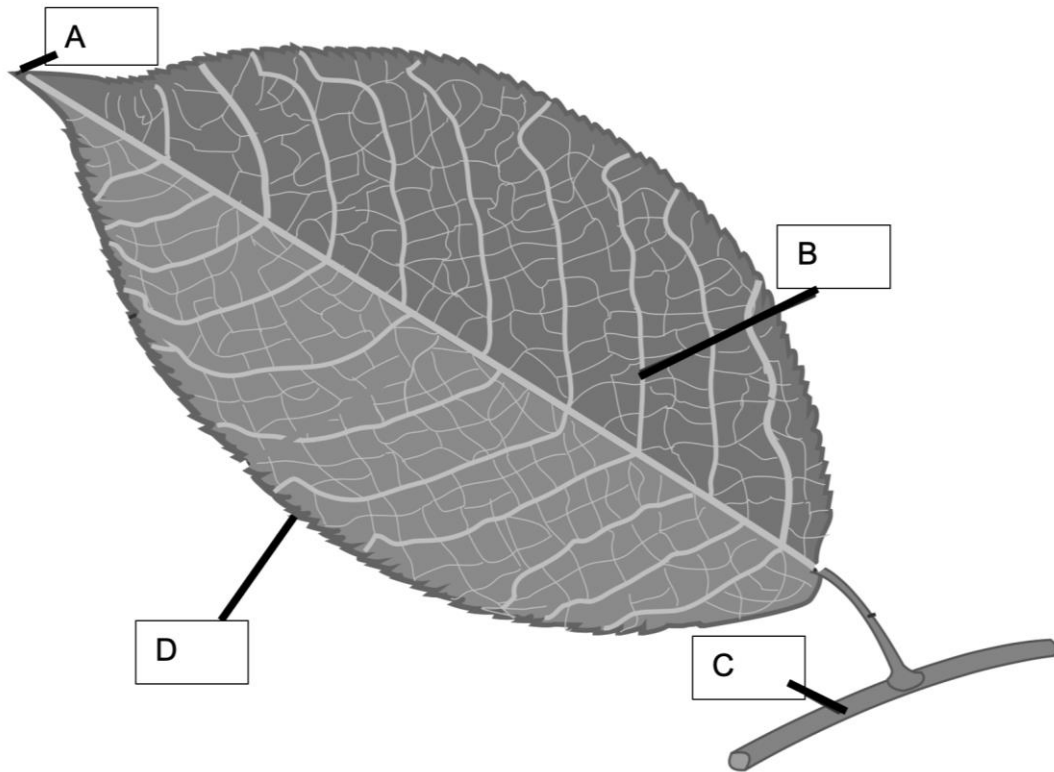
5) Angel is reading text online and must decide if the statements they read are claims that can be trusted. Angel knows that claims are based on facts not opinions. Which of the following is NOT a claim? (Choose the best answer)

- Ⓐ Deciduous trees lose their leaves every year.
- Ⓑ Plants have adaptations that help them survive in their environments.
- Ⓒ Habitats in the US are better than any other around the world.
- Ⓓ Fossils often form between the layers of a sedimentary rock.

6) Which two materials are needed for fossils to form?

- Ⓐ Lava and dinosaurs
- Ⓑ Organisms and sediment
- Ⓒ Plants and bacteria
- Ⓓ Water and photosynthesis

7) Which part of the leaf below helps to transport water and nutrients in the plant?



- Ⓐ
- Ⓑ
- Ⓒ
- Ⓓ

8) When would Jaylen need to use the strategy “Making connections across informational texts”? (Choose the best answer)

- Ⓐ When they read to their baby brother
- Ⓑ When it is time to go to the library
- Ⓒ When they are reading a fictional book
- Ⓓ When they want to put a lot of information together into a statement

9) Your team is comparing a fossil of a leaf to a real leaf. What is one piece of evidence that might tell you if the leaves are related? (Choose the best answer)

- Ⓐ The structures of both leaves are similar.
- Ⓑ Both leaves are brown.
- Ⓒ The sizes of both leaves are similar.
- Ⓓ Both leaves are missing parts.

10) Cris will present what they know about adaptations with the class. The presentation must include at least three claims. Which of these statements would Cris NOT include when presenting a claim?

- Ⓐ Facts found in books
- Ⓑ Data from science investigations
- Ⓒ Facts from a scientific website
- Ⓓ Someone's opinions about adaptations